

Avon Local School District



State of Avon Local Schools 2024

-Presented By Ben Hodge
Avon Local Schools Superintendent



BOARD Of Education and Recognition

Tara Tatman - President

Christine Libeg - Vice President

Alissa Gault

Dennis Kramer

John Weigman

Treasurer- Sadie Fox



The Entire Avon Local
School Team,
Families &
Community Partners



Welcome

AGENDA

Academic
Achievements

Financial Update

Safety Initiatives and
Updates

Facilities Update

Future
Planning



Mission and Vision

The **Mission** of the Avon Local Schools is to educate the whole student in an inclusive environment that inspires personal excellence.

The **Vision** of the Avon Local Schools is to create a legacy of excellence, innovation and service fostered through collaboration within the community.



Avon Local School Buildings

BUILDING	GRADES	ENROLLMENT	STAFF
AHS	9-12	1457	113
AMS	6-8	1087	100
Heritage	3-5	981	101
East	1-2	635	61
AELC	PreK-K	412	38
JVS	9-12	35 (JVS) 5 (TEE) 21 (CBI)	
BOE and Transportation			48 (Transportation) 30 (BOE)



Avon Schools-Transportation

**31 Regular
Routes**

41 Bus Fleet

**356,000 Miles Driven
Transporting Students**





Avon Schools - Food Services

**Serves on average
235 daily
breakfasts**

**Serves on average
1560 daily lunches**

**Contract services
through Chartwells**





**ACADEMIC
UPDATE**



AVON LOCAL SCHOOLS

THE MODEL EAGLE

INNOVATIVE:

- Identifies and evaluates solutions to problems
- Learns from experimentation
- Thinks flexibly
- Sees uncertainties as opportunities
- Pursues imaginative and creative solutions

RESILIENT:

- Overcomes personal/academic barriers to meet goals
- Persists to accomplish difficult tasks
- Learns from mistakes and failures
- Resolves conflict peacefully
- Responds in a disciplined way

COLLABORATIVE:

- Values individual contributions and teamwork
- Listens actively
- Communicates effectively
- Gives and receives feedback
- Works with others to accomplish a goal

GLOBAL:

- Demonstrates service to both local and larger community
- Acts with empathy and compassion
- Seeks cultural understanding
- Embraces diversity
- Makes safe, legal, and ethical choices

EMPOWERED:

- Develops and implements ideas
- Analyzes problems and outcomes
- Asks questions
- Speaks and writes clearly
- Takes personal responsibility for learning and growth



We are a **Diverse** group of over **4,474 PreK-12 Learners**



We support **125 Eng. Language Learners** [2.79%] who speak **33** different languages



We support **1101 student athletes** in grades 7-12 and **936** in the **Performing Arts**



We support **1,462 learners** [33%] who are identified as **Gifted**



We support **500 learners** [11%] who are provided **Special Education Services and Supports**



We support **647 learners** [14.4%] who are provided **Free/Reduced Lunch**



Avon Local Schools-Academic Highlights



Significantly exceeds state standards

Overall Rating

[Print](#)

Districts and schools receive an overall rating of 1 to 5 stars in half-star increments. The overall rating is comprised of five rated components. The College, Career, Workforce and Military Readiness Component is report only and does not contribute to the overall rating on the 2023 Ohio School Report Cards.

Achievement

This component represents whether student performance on state tests met established thresholds and how well students performed on tests overall.



Significantly exceeds state standards in academic achievement

[View More Data](#)

Progress

This component looks closely at the growth all students are making based on their past performances.



Significant evidence that the district exceeded student growth expectations.

[View More Data](#)

Gap Closing

The Gap Closing Component is a measure of the reduction in educational gaps for student subgroups.



Significantly exceeds state standards in closing educational gaps

[Gifted Data](#)

[View More Data](#)

Graduation

The Graduation Component is a measure of the four-year adjusted cohort graduation rate and the five-year adjusted cohort graduation rate.



Significantly exceeds state standards in graduation rates

[View More Data](#)

Early Literacy

The Early Literacy Component is a measure of reading improvement and proficiency for students in kindergarten through third grade.



Significantly exceeds state standards in early literacy (K-3)

[View More Data](#)

College, Career, Workforce and Military Readiness

This component looks at how well-prepared Ohio's students are for future opportunities, whether training in a technical field or preparing for work or college.

[View More Data](#)



Strategic Plan 2022-2025

**26
Action
Steps**

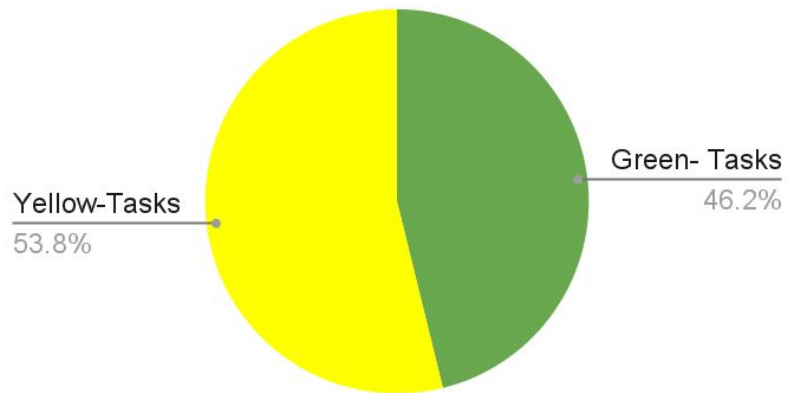
**Curriculum / Staff
Development**

**Community Well
Being**

Culture and Communications

Capital Assets and Security

Strategic Plan Audit



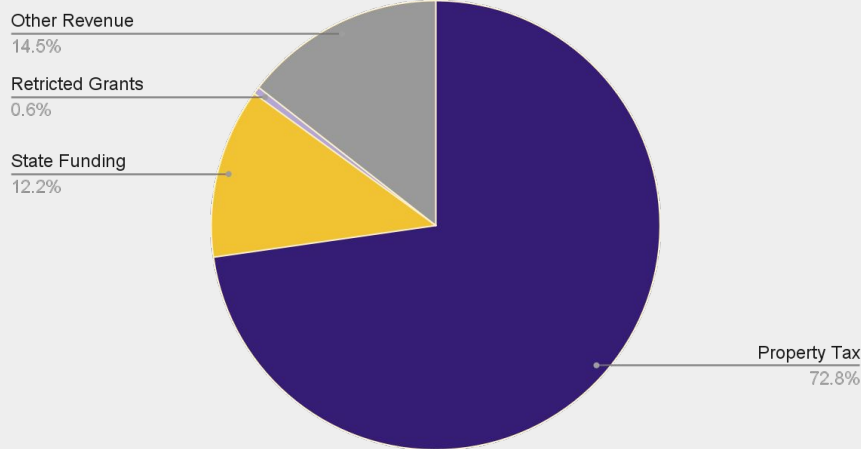


**FINANCIAL
UPDATE**



FINANCIAL UPDATE - Revenue

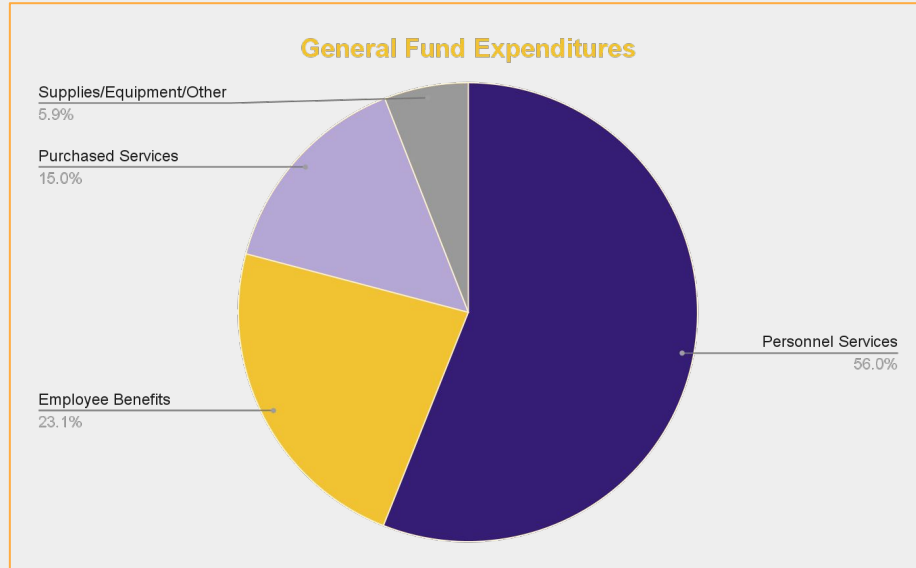
General Fund Revenue



The majority of our General Fund revenue comes from property taxes. Property tax increases are voted by taxpayers. The last time Avon Local Schools asked the community for funding was in 2019. At that time we guaranteed that we would not ask for more funding for at least 5 years.



FINANCIAL UPDATE - Expenditures



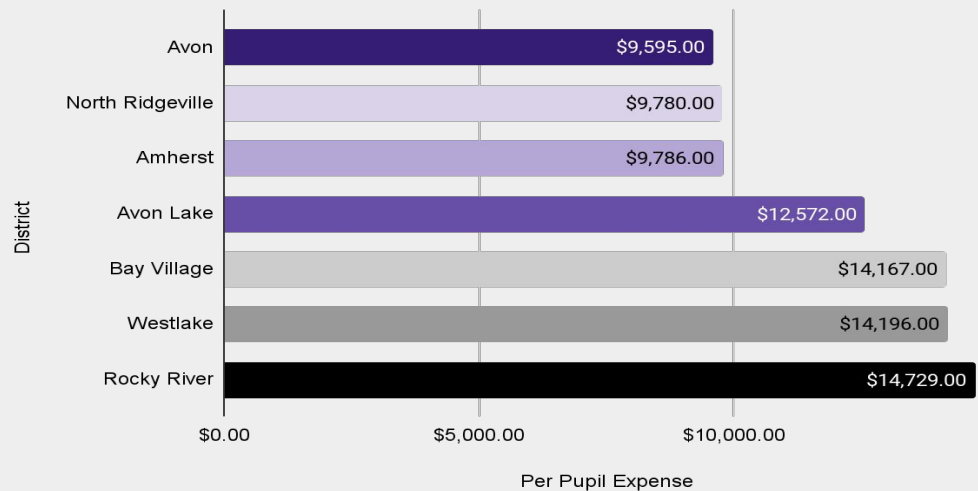
General Fund expenditures are largely used to pay for staff salaries and benefits, as well as district wide purchased services for things like School Resource Officers, utilities, tuition for students placed out of the district, repairs, and more.



FINANCIAL UPDATE - Per Pupil Cost

Return on Investment

We remain as one of the highest achieving districts in the area all while being in the lowest per pupil expense





FINANCIAL UPDATE

We are forecasting positive cash balances through Fiscal Year 2028, with deficit spending occurring in Fiscal Year 2027

	Actual			Forecasted				
	Fiscal Year 2021	Fiscal Year 2022	Fiscal Year 2023	Fiscal Year 2024	Fiscal Year 2025	Fiscal Year 2026	Fiscal Year 2027	Fiscal Year 2028
<i>Total Revenues</i>	49,561,620	51,630,731	54,348,597	57,728,670	60,473,759	62,969,460	63,759,668	65,507,148
<i>Total Expenditures</i>	43,984,022	46,041,188	49,293,168	53,599,960	57,339,119	60,907,481	64,781,954	68,892,705
<i>Cash Balance June 30</i>	14,818,346	19,352,632	23,822,175	26,049,425	28,784,065	30,446,044	29,023,758	25,238,201



**SAFETY
UPDATE**



SAFETY UPDATE

**“School Safety is
EVERYONE’S
Responsibility”**

-US Department of Homeland Security



SAFETY UPDATE

Perceptions About How Bullying Happens

Based on what you have seen or heard, do you think that most of the bullying that occurs is happening between students is, in-person, in the schools and classrooms or online, through social media?

54%

Online through social media

OVERALL RESULTS

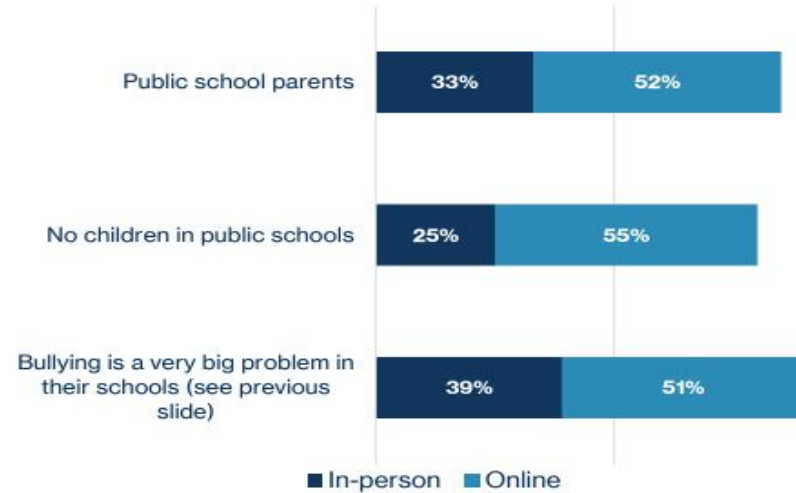
19%

Unsure

27%

In-person in the schools and classrooms

SELECT SUB-GROUP RESULTS

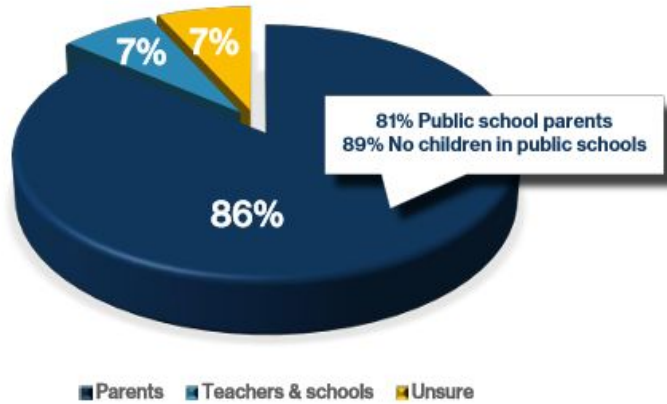




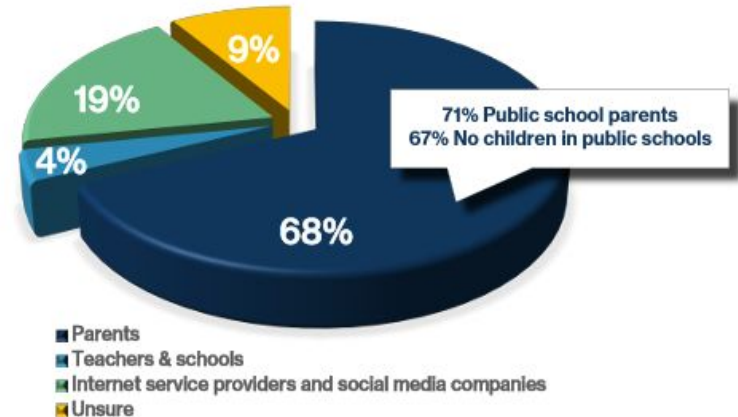
SAFETY UPDATE

Who Can Stop Online Bullying (split sample testing)

VERSION A: Who do you think is most capable of preventing students from using technology and social media to bully their classmates, their parents or their teachers & schools?



VERSION B: Who do you think is most capable of preventing students from using technology and social media to bully their classmates, their parents, their teachers & schools or Internet providers and social media companies?





Safety and Wellness

**School
Counselors**

**AHS- 4 Counselors
AMS- 2 Counselors
Heritage- 2 Counselors
East- 1 Counselor**

**Social
Workers**

District- 2 Social Workers

**School
Psychologist**

**AHS- 1 School Psychologist
AMS- 1 School Psychologist
Heritage- 1 School Psychologist
East- 1 School Psychologist
AELC- 1 School Psychologist**



Safety Grants and Improvements

Investment in Safety and Security



**Safety
Grants
\$520,000**



**SRO
Personnel**



**Direct Communication
and Police Access**



**Secure Fob
and Key
Access**



**Window
Coverings**



Safety Practices and Improvements

- **Emergency Operation Plans and Drills**
 - Fire, Tornado (Monthly Requirements)
 - Safety- Run/Hide/Fight, Reverse Evacuations, Active Threat, Table Top Discussions
- **Safety Teams** with Local Law Enforcement and Threat Assessment Teams
- **District Safety Communication**
 - Monthly to remind of best practices, drills and other important information
- **Partnership with Avon PD and Avon Avon FD and Safety Director**
 - Active Threat and K9 trainings throughout the year
 - Visibility within the Schools
 - SRO Officers- AHS, AMS and Elementary
- **Cameras**- 340 Building Cameras in District - Busses equipped as well
- **AED's** - 27 Throughout our buildings and outside facilities



**SPEAK UP
SAVE LIVES**

By calling or texting the statewide hotline - **844-SAFEROH** - you can report anything that is suspicious or endangering you, your friends or your school.



**FACILITIES
UPDATE**



Enrollment Study - December 2023

Total Population

	2010 Census	2020 Census
Lorain County	301,356	312,964
Avon City	21,193	24,847

Source: 2010 Census: DEC Summary File 2; 2020 Decennial Census





Enrollment Study - December 2023

Avon City Building Permits Issued

Year	Single Family	Townhouses/Apartments
2012	96	0
2013	127	0
2014	126	0
2015	121	0
2016	117	84
2017	93	26
2018	110	0
2019	120	39
2020	104	28
2021	45	45
2022*	39	0

Source: Avon City Building Department

*as of 11/30/22



Enrollment Study - December 2023

Avon Local School District Historical Enrollment by Grade Group

Grade	2013-14	2014-15	2015-16	2016-17	2017-18	2018-19	2019-20	2020-21	2021-22	2022-23
Pre-K - K	421	397	448	424	451	432	484	478	470	446
1 - 2	662	627	596	633	632	632	605	623	656	657
3 - 5	1,089	1,091	1,047	1,006	969	984	1,040	1,038	995	1,014
6 - 8	1,008	1,018	1,089	1,119	1,127	1,102	1,092	1,092	1,095	1,099
9 - 12	1,140	1,153	1,175	1,212	1,299	1,359	1,389	1,470	1,482	1,475
Pre-K - 12 Total	4,320	4,286	4,355	4,394	4,478	4,509	4,610	4,701	4,698	4,691
Ungraded	4	5	6	2	0	0	0	0	0	7
Grand Total	4,324	4,291	4,361	4,396	4,478	4,509	4,610	4,701	4,698	4,698



Enrollment Study - December 2023

Avon Local School District Projected Enrollment by Grade Group

Grade	2022-23 Actual	2023-24	2024-25	2025-26	2026-27	2027-28	2028-29	2029-30	2030-31	2031-32	2032-33
Pre-K - K	446	434	558	478	471	484	496	504	516	527	537
1 - 2	657	639	596	658	690	632	636	651	665	678	692
3 - 5	1,014	1,018	1,071	1,047	1,003	1,044	1,057	1,088	1,032	1,045	1,068
6 - 8	1,099	1,119	1,070	1,099	1,102	1,159	1,130	1,084	1,131	1,143	1,175
9 - 12	1,475	1,469	1,462	1,447	1,481	1,450	1,460	1,484	1,489	1,521	1,468
Pre-K - 12 Total	4,691	4,679	4,757	4,729	4,747	4,769	4,779	4,811	4,833	4,914	4,940
Ungraded	7	7	8	8	8	8	8	8	8	8	8
Grand Total	4,698	4,686	4,765	4,737	4,755	4,777	4,787	4,819	4,841	4,922	4,948



FACILITIES UPDATE - HIGH SCHOOL

AHS

Built: 1998

Renovations: 2008 and 2022

Square Footage: 250,000 Acres: 43

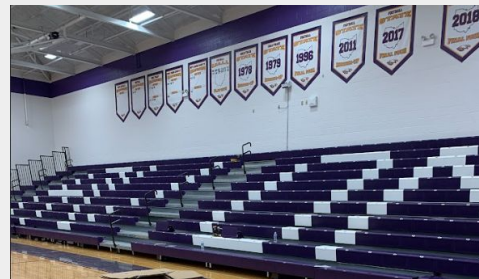
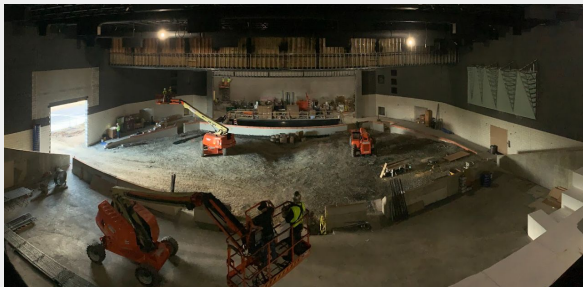
Major Projects Recently Done: Roofs, Gym Bleachers, Kitchen Renovation, Parking Lot Lights, Tennis Courts, Turf Softball Field, New Fire Alarm System, HVAC Controls Upgrade, New Ceramics Room

Major Projects Needed: Old Section Boilers, Window Replacement, Aux Gym Floor, Locker Rooms





FACILITIES UPDATE - HIGH SCHOOL





FACILITIES UPDATE - MIDDLE

AMS

Built: 2015

Square Footage: 164,000

Acres: 47

Major Projects Recently Done: New Turf Field, New Storage Shed

Major Projects Needed: Track Resurface, LED Upgrades





FACILITIES UPDATE - MIDDLE





FACILITIES UPDATE - HERITAGE

HERITAGE

Built: North: 2002 South: 2005

Connector: 2007

Square Footage: 148,281 Acres: 40

Major Projects Recently Done: Roofs, Parking Lot Lights, HVAC Controls Upgrade

Major Projects Needed: North Boilers, Window Replacement, New Fire Alarm System, Gym Bleachers, South Pavement, Exterior Doors





FACILITIES UPDATE - HERITAGE





FACILITIES UPDATE - EAST

EAST

Built: 1961

Renovations: 2003 and 2004



Square Footage: 70,490

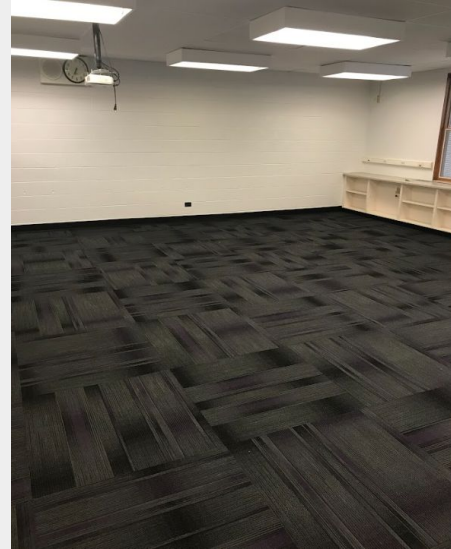
Acres: 9

Major Projects Recently Done: Library Upgrade, Courtyard Upgrade, New Serving Line, Parking Lot/Building Lights

Major Projects Needed: Roof, HVAC Upgrades, Fire Alarm System, Windows, Exterior Doors



FACILITIES UPDATE - EAST





FACILITIES UPDATE - AELC

AELC

Built: 1956

Renovations: Throughout

Square Footage: 64,490

Acres: 38

Major Projects Recently Done: Fire Alarm System

Major Projects Needed: Roofs, HVAC Upgrades,
Kitchen Renovation, Plumbing Upgrades





FACILITIES UPDATE - VILLAGE SCHOOL

BOARD of EDUCATION

Built: 1924

Renovations: Throughout

Square Footage: 49,221

Acres: 7

Major Projects Recently Done: BOE Conversion,
New Fire Alarm System

Major Projects Needed: Roofs, HVAC, Electrical,
Plumbing, Windows, Exterior Doors





FACILITIES UPDATE - BUS GARAGE

BUS GARAGE

Built: 2006

Square Footage: 4,700

Major Projects Recently Done: Asphalt Bus Parking Lot, Parking Lot / Building Lights, Cosmetic Upgrades

Major Projects Needed: Roof, Exterior Doors, New Fuel Tank



A large yellow arrow pointing to the right, with a white outline, containing the text "FUTURE PLANNING".

**FUTURE
PLANNING**



RENOVATION TO REPLACE RATIO

Avon Local Schools Preliminary Assessment Summary

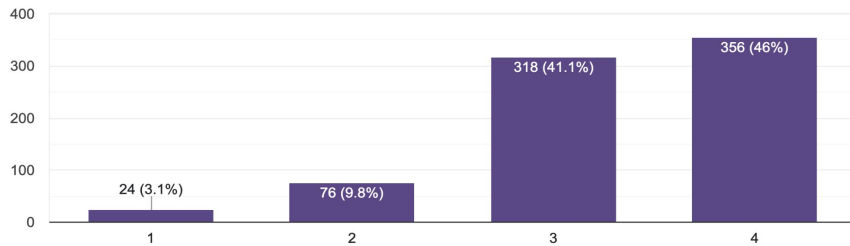
	Renovate to Replace Ratio
East Elementary (Existing 70,490 SF)	78%
Heritage Elementary (Existing 148,281 SF)	40%
Early Learning Center (Existing 64,490 SF)	89%
Board of Education (Existing 49,221 SF)	91%



FUTURE PLANNING

Culture: Parent/community member input is welcomed.

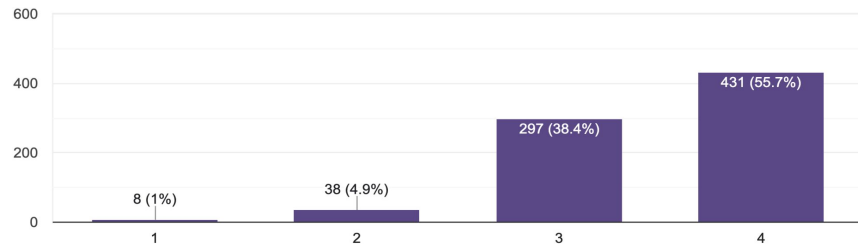
774 responses



FUTURE Planning Meeting
March 11, 2024 6pm
AMS MEDIA CENTER

Communication: Overall, I feel as though the district communicates well.

774 responses





FUTURE PLANNING

MASTER PLANNING ENGAGEMENT GROUPS

District
Leadership

Board of Education

Core Team
Superintendent
Treasurer
Assistant Superintendent
Buildings Operations
Architect

Planning
Committee

Sub Committee
Representatives from all
stakeholders

Meet regularly to
focus on facility
master planning

Schools

Teachers + Staff

Students + Parents

Engaged throughout the
process through surveys or
meetings

Community

Community
Members

Engaged
throughout the
process through
focused groups or
surveys



Q&A

We are open for Q&A



Follow-Up Communication will include the recording of tonight's presentation, FAQ, and Sign up for a Future Planning Committee



Contacts

If you have specific questions, please contact any of the following:

Ben Hodge, Superintendent - hodgeb@avoneagles.org

Sadie Fox, Treasurer- foxs@avoneagles.org

Jen Fitch, Asst. Superintendent - fitchv@avoneagles.org

Val Kaminski, Curriculum Director - kaminskiv@avoneagles.org

Bill Fishleigh, Director of Operations - fishleighb@avoneagles.org